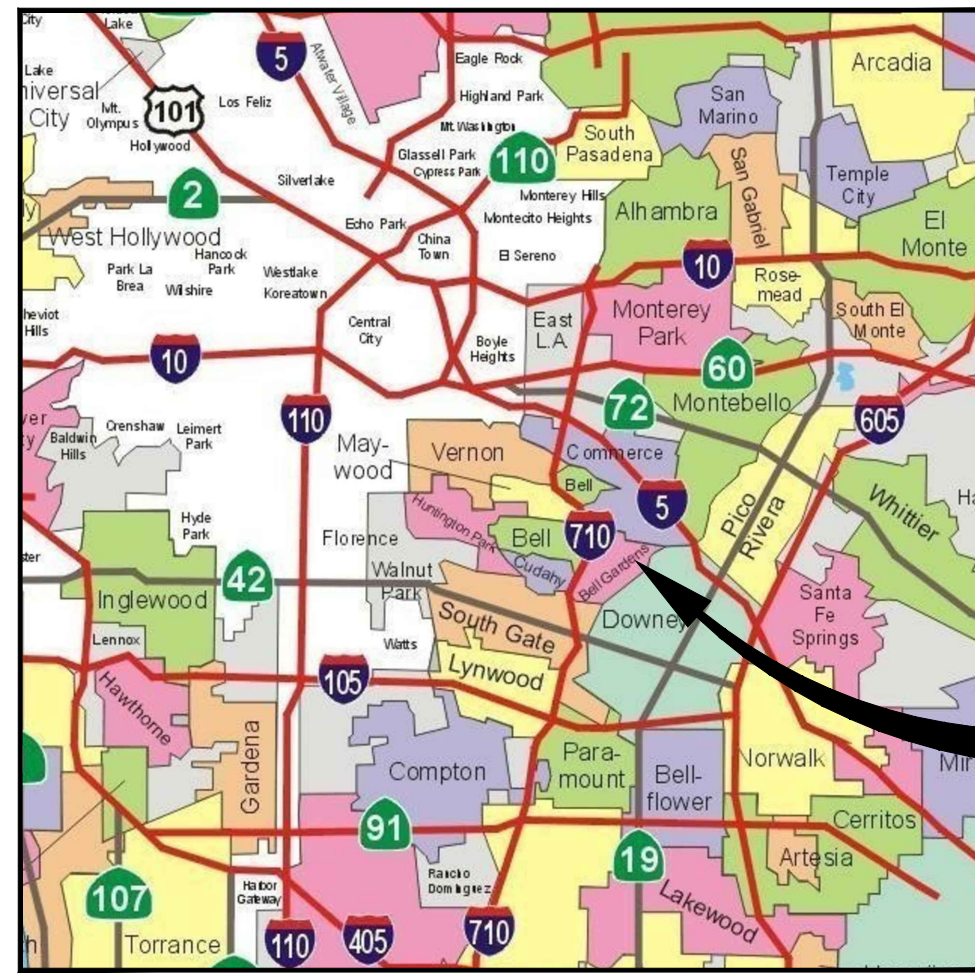




CITY OF  
*Bell Gardens* CALIFORNIA  
Department of Public Works

VARIOUS ALLEYS IMPROVEMENTS PROJECT  
C.I.P. NO. 3930



PROJECT SITE

VICINITY MAP  
NOT TO SCALE



PROJECT UTILITY CONTACTS

AT&T INQUIRIES MR. JOSEPH FORKERT	(510) 645-2929 jof@forkertengineering.com
CALIFORNIA WATER SERVICES MR. PHILIP DELGADO	(323) 263-4145 pdelgado@calwater.com
CHEVRON MR. DAVE ZERLER	(310) 669-4014 davezerler@chevron.com
CITY OF BELL GARDENS - WATER & SEWER PUBLIC WORKS INSPECTOR	(562) 806-7775
CITY OF BELL GARDENS DOUG BENASH, CITY ENGINEER	(562) 806-7770
CITY OF CUDAHY MR. AARON HERNANDEZ	(323) 773-5143 ahernandez@cityofcudahyca.gov
CITY OF DOWNEY MR. DANNY SALAS	(562) 904-7202 dsalas@downeyca.org
CITY OF SOUTH GATE PUBLIC WORKS ENGINEERING	(323) 357-9657 pwengineering@sogate.org
CRIMSON PIPELINE UTILITY COORDINATOR	(562) 285-4100 landepartment@crimsonpl.com
CROWN CASTLE - LA & VEN FIBER DIG	(888) 632-0931 fiber.dig@crowncastle.com
FRONTIER MS. CATHY BROWN	(310) 264-5100 brown.cathy@fr.com
GOLDEN STATE WATER - BELL GARDENS MR. RAY BURK	(562) 907-9200 ray.burk@gswater.com
L.A. COUNTY SANITATION DISTRICT ENGINEERING COUNTER	(562) 908-4288 engineeringcounter@lccsd.org
LIBERTY UTILITIES MR. JIM ELLIOT	(562) 299-5127 jim.elliott@libertyutilities.com
MAYWOOD MUTUAL WATER DISTRICT MR. STEVEN ROJO	(323) 581-5816 maywoodgm@a.twcba.com
METROPOLITAN WATER DISTRICT - SOTO ST. SUBSTRUCTURES TEAM	(213) 217-7663
MUTUAL WATER COMPANY MS. JESUS BARRERA	(323) 771-6682
PLAINS ALL AMERICAN PIPELINE MS. PAULA BAWDEN	(562) 728-2371 p.bawden@paalp.com
SC GAS - DOWNEY MS. STEVE GOMEZ	(714) 456-2419 sgomez3@scocalgas.com
SOUTHERN CALIFORNIA GAS COMPANY - TRANSMISSION SOCALGAS TRANSMISSION	(818) 701-4546 socialgastransmissionutilityrequest@semprautilities.com
SOUTHERN CALIFORNIA EDISON - DISTRIBUTION DESIGN SUPPORT/UND	(562) 903-3167 UND@sce.com
SOUTHERN CALIFORNIA EDISON - TELECOMMUNICATIONS DESIGN SUPPORT/UND	(562) 903-3167 UND@sce.com
SOUTHERN CALIFORNIA EDISON - TRANSMISSION DESIGN SUPPORT/UND	(562) 903-3167 UND@sce.com
SPECTRUM - IRWINDALE ENGINEERING	(866) 874-2389 dl-social-charter-engineering@charter.com
UNDERGROUND SERVICE ALERT	811

- 1 ALLEY N/O FLORENCE AVE. BETWEEN END AND EMIL AVE.
- 2 ALLEY N/O FLORENCE AVE. BETWEEN EMIL AVE. & END
- 3 ALLEY W/O GARFIELD AVE. BETWEEN MULLER ST. & QUINN ST.
- 4 ALLEY W/O GARFIELD AVE. BETWEEN QUINN ST. & END
- 5 ALLEY E/O EASTERN AVE. BETWEEN JABONERIA RD. & QUINN ST.
- 6A (ADDITIVE BID ITEM): ALLEY N/O FLORENCE PL. BETWEEN GRANGER AVE. & ALLEY
- 7B (ADDITIVE BID ITEM): ALLEY N/O FLORENCE PL. BETWEEN TOLER AVE. & GARFIELD AVE.

INDEX OF DRAWINGS		
DWG. NO.	SHEET NO.	DESCRIPTION
C-1	1 OF 5	TITLE SHEET
C-2	2 OF 5	GENERAL NOTES, CONSTRUCTION NOTES, LEGEND AND ABBREVIATIONS
C-3	3 OF 5	TYPICAL CROSS SECTIONS AND DETAIL
C-4	4 OF 5	ALLEY IMPROVEMENT PLAN
		1 ALLEY N/O FLORENCE AVE. BETWEEN END AND EMIL AVE.
		2 ALLEY N/O FLORENCE AVE. BETWEEN EMIL AVE. & END
		3 ALLEY W/O GARFIELD AVE. BETWEEN MULLER ST. & QUINN ST.
C-5	5 OF 5	ALLEY IMPROVEMENT PLAN
		5 ALLEY E/O EASTERN AVE. BETWEEN JABONERIA RD. & QUINN ST.
		6A (ADDITIVE BID ITEM): ALLEY N/O FLORENCE PL. BETWEEN GRANGER AVE. & ALLEY
		7B (ADDITIVE BID ITEM): ALLEY N/O FLORENCE PL. BETWEEN TOLER AVE. & GARFIELD AVE.

TOTAL SHEETS = 5

PROFESSIONAL ENGINEER'S NOTE:

THE PLANS AND SPECIFICATIONS HAVE BEEN PREPARED BY INFRASTRUCTURE ENGINEERS USING AVAILABLE RECORD PLANS AND MAPS AND BASED ON FIELD RECONNAISSANCE OF EXISTING CONDITIONS. OWNERS OF KNOWN UTILITIES AND OTHER STRUCTURES IN THE STREET RIGHT OF WAY HAVE BEEN GIVEN WRITTEN NOTICE OF THE PROJECT. HOWEVER, INFRASTRUCTURE ENGINEERS AND CITY OF BELL GARDENS ARE NOT RESPONSIBLE FOR THE TOTAL ACCURACY AND/OR CORRECTNESS OF THE SHOWN INFORMATION. THE CONTRACTOR BY SIGNING THE CONSTRUCTION CONTRACT FOR THIS PROJECT ACCEPTS AND ASSUMES FULL RESPONSIBILITY FOR THE WORK AND ITS IMPACT ON THE EXISTING FACILITIES SHOWN OR NOT SHOWN ON THESE PLANS AND DESCRIBED IN THE SPECIFICATIONS.

THE CONTRACTOR IS RESPONSIBLE TO MAKE HIS/HER OWN INVESTIGATION AND INSPECTION INCLUDING POT-HOLING AND SUCH OTHER METHODS HE/SHE DEEMS NECESSARY TO ALLOW HIM/HER TO PROCEED ON THE CONSTRUCTION OF THIS PROJECT IN COMPLIANCE WITH THE LAWS, ORDINANCES AND REGULATIONS APPLICABLE TO THE PROJECT, INCLUDING STATE SAFETY ORDERS AND PROCEDURES OF USA.

THE CONTRACTOR IS RESPONSIBLE FOR PROVIDING ANY SURVEYS REQUIRED TO ESTABLISH HORIZONTAL AND VERTICAL CONTROLS PRIOR TO AND DURING CONSTRUCTION, AND TO REPLACE DISTURBED OR COVERED EXISTING STREET SURVEY MONUMENTS.

UNAUTHORIZED CHANGES AND USES:

CAUTION: THE ENGINEER PREPARING THESE PLANS WILL NOT BE RESPONSIBLE FOR, OR LIABLE FOR, UNAUTHORIZED CHANGES TO OR USES OF THESE PLANS.



LEGEND:

- PROJECT LOCATION
- CITY LIMIT
- ADDITIVE "A"
- ADDITIVE "B"

LOCATION MAP  
NOT TO SCALE



TG: PAGE 705  
GRIDS G2, H1, H2, J1 & J2

BENCHMARK: COUNTY OF LOS ANGELES COUNTY BM PY12054  
FOUND LEAD & DPW TAG IN SOUTH CB 1FT EAST OF BCR @ SOUTH  
EAST CORNER OF FLORENCE AVENUE AND IRA AVENUE.  
ELEVATION=122.950 FT  
BASIS OF BEARINGS: HORIZONTAL CONTROL BASED ON  
HORIZONTAL CONTROL NETWORK, CALIFORNIA COORDINATE  
SYSTEM, CCS83, ZONE VI.

**CONTRACT BY BEFORE YOU DIG**  
**811**  
**SAFE DIGGING PARTNER**

UNDERGROUND SERVICE ALERT OF SOUTHERN CALIFORNIA

ATTENTION IS DIRECTED TO THE POSSIBLE EXISTENCE OF UNDERGROUND FACILITIES NOT SHOWN OR IN A LOCATION DIFFERENT FROM WHAT IS SHOWN ON THE PLANS OR IN THE SPECIAL PROVISIONS. THE CONTRACTOR SHALL TAKE STEPS TO ASCERTAIN THE EXACT LOCATION OF ALL UNDERGROUND FACILITIES PRIOR TO START OF WORK THAT MAY DAMAGE SUCH FACILITIES OR INTERFERE WITH THEIR SERVICES. BEFORE EXCAVATION, THE CONTRACTOR SHALL VERIFY THE LOCATION OF UNDERGROUND UTILITIES BY CONTACTING UNDERGROUND UTILITIES SERVICE ALERT AT 1 (800) 422-4133.

REVISIONS			
NO.	DATE	BY	DESCRIPTION

UNDER THE SUPERVISION OF:

**INFRASTRUCTURE ENGINEERS**  
3800 Sepulveda Street, Suite 250  
Brea, CA 92821  
Tel: (714) 940-0100  
Fax: (714) 940-0700  
www.infrastructure-engineers.com

DESIGNED BY: J. SANTILLAN  
DRAWN BY: J. SANTILLAN  
CHECKED BY: M. FARAHANI DATE: 8/14/23

APPROVED BY:

CITY ENGINEER	DATE
REVIEWED BY	DATE

VARIOUS ALLEYS IMPROVEMENTS

TITLE SHEET

Drawing Number:  
**C-1**

Sheet 1 of 5

**GENERAL NOTES**

- ALL WORK SHALL BE DONE IN ACCORDANCE WITH THESE PLANS, THE PROJECT SPECIFICATIONS, STANDARD PLANS FOR PUBLIC WORKS CONSTRUCTION 2021, STANDARD SPECIFICATION FOR PUBLIC WORKS CONSTRUCTION 2021, AND CALTRANS STANDARD PLANS AND SPECIFICATIONS (LATEST EDITION) INCLUDING ADDITIONS AND SUPPLEMENTS.
- THE CONTRACTOR AGREES THAT HE SHALL ASSUME SOLE AND COMPLETE RESPONSIBILITY FOR JOB SITE CONDITIONS DURING THE COURSE OF CONSTRUCTION OF THIS PROJECT, INCLUDING THE SAFETY OF ALL PERSONS AND PROPERTY. THAT THIS REQUIREMENT SHALL APPLY CONTINUALLY AND NOT BE LIMITED TO NORMAL WORKING HOURS; AND THAT THE CONTRACTOR SHALL DEFEND, INDEMNIFY, AND HOLD THE CITY OF BELL GARDENS AND THE ENGINEER HARMLESS FROM ANY AND ALL LIABILITY, REAL OR ALLEGED, IN CONNECTION WITH THE PERFORMANCE OF HIS/HER WORK ON THIS PROJECT.
- IT SHALL BE THE CONTRACTOR'S RESPONSIBILITY TO OBTAIN AND PAY FOR ANY PERMITS REQUIRED BY THE CITY OF BELL GARDENS PUBLIC WORKS DEPARTMENT AND RELEVANT OTHER AGENCIES IN ORDER TO DO THE WORK SHOWN ON THESE PLANS.
- IT SHALL BE THE CONTRACTOR'S RESPONSIBILITY TO PROTECT SURVEYING MONUMENTS IN PLACE, AND THE CONTRACTOR SHALL BE FINANCIALLY RESPONSIBLE FOR RESETTING DAMAGED OR DESTROYED MONUMENTS.
- IT SHALL BE THE CONTRACTOR'S RESPONSIBILITY TO FAMILIARIZE HIMSELF/HERSELF WITH THE JOB SITE AND ANY UNDERGROUND UTILITIES/FACILITIES, WHETHER SHOWN OR NOT SHOWN ON THE PLANS. THE CONTRACTOR SHALL CALL UNDERGROUND SERVICE ALERT AT 811 TO LOCATE UTILITY FACILITIES AT LEAST TWO (2) WORKING DAYS BEFORE DOING ANY EXCAVATION. ALL PIPELINES, SUBSTRUCTURES, OR UTILITIES OF ANY KIND, WHETHER SHOWN ON THESE PLANS OR NOT, SHALL BE PROTECTED IN PLACE, OR IF REMOVED, RELOCATED OR REINFORCED TO THE SATISFACTION OF THE CITY ENGINEER BY THE OWNER OF THE FACILITY. PRIOR TO START OF CONSTRUCTION CONTRACTOR SHALL VERIFY THE LOCATION OF UNDERGROUND UTILITIES AND SUBSTRUCTURES.
- THE CONTRACTOR SHALL BE HELD RESPONSIBLE FOR ANY FIELD CHANGES MADE WITHOUT PRIOR WRITTEN AUTHORIZATION FROM THE CITY ENGINEER.
- THE CONTRACTOR SHALL GIVE THE CITY OF BELL GARDENS PUBLIC WORKS DEPARTMENT AT LEAST THREE (3) WORKING DAYS ADVANCE NOTICE PRIOR TO ALL INSPECTION REQUESTS AT (562) 806-7789.
- CONSTRUCTION TRAFFIC CONTROL AND TEMPORARY SIGNING SHALL BE PROVIDED BY THE CONTRACTOR IN ACCORDANCE WITH CALTRANS TRAFFIC ENGINEERING MANUAL, MUTCD 2014 AND CALIFORNIA SUPPLEMENT AND AS SPECIFIED BY THE CITY ENGINEER. CONTRACTOR SHALL PROVIDE TRAFFIC CONTROL PLANS AS SPECIFIED.
- ACCESS TO ALL DRIVEWAYS SHALL BE MAINTAINED AT ALL TIMES EXCEPT WHEN PRECLUDED BY NECESSARY CONSTRUCTION FOR REASONABLE PERIODS OF TIME AS PRE-APPROVED BY THE CITY ENGINEER.
- THE CONTRACTOR SHALL REMOVE FROM THE VICINITY OF THE COMPLETED WORK ALL PLANTS, BUILDING RUBBISH, UNUSED MATERIALS, CONCRETE FORMS, AND EQUIPMENT BELONGING TO THE CONTRACTOR OR USED UNDER HIS/HER DIRECTION DURING CONSTRUCTION.
- THE CONTRACTOR SHALL TAKE ALL NECESSARY AND PROPER PRECAUTIONS TO PROTECT ADJACENT PROPERTIES FROM ANY AND ALL DAMAGE THAT MAY OCCUR FROM THE CONTRACTOR'S OPERATIONS.
- ASPHALT CONCRETE REMOVALS AND/OR JOINTS SHALL BE CONSTRUCTED TO CLEAN STRAIGHT LINES BY SAW CUTTING TO A FULL DEPTH OF PAVEMENT.
- THE CONTRACTOR SHALL BE RESPONSIBLE FOR PLACING ALL REGULATORY AND WARNING SIGNS.
- INSTALL EXPANSION JOINTS AT ALL JOINT POINTS TO EXISTING PORTLAND CONCRETE AND AT 20' INTERVALS IN NEW CONCRETE.
- THESE PLANS HAVE BEEN CHECKED BY THE CITY OF BELL GARDENS ONLY FOR CONFORMANCE WITH THE CITY STANDARDS AND SPECIFICATIONS, COMPLIANCE WITH DEVELOPMENT CONDITIONS AND FOR GENERAL CONCEPTUAL APPROVAL OF THE STREET AND DRAINAGE DESIGN AS SHOWN THERE ON. NO DETAILED MATHEMATICAL CHECK WAS MADE FOR THE ACCURACY OF THE EXISTING OR PROPOSED DIMENSION LINES OR GRADES SHOWN, INCLUDING ALL EXISTING UTILITIES SHOWN OR NOT SHOWN.

**NOTICE TO CONTRACTOR:**

ALL CONTRACTORS AND SUBCONTRACTORS PERFORMING WORK SHOWN IN OR RELATED TO THESE PLANS SHALL CONDUCT THEIR OPERATIONS SO THAT EMPLOYEES ARE PROVIDED A SAFE PLACE TO WORK AND THE PUBLIC IS PROTECTED. ALL CONTRACTORS AND SUBCONTRACTORS SHALL COMPLY WITH THE "OCCUPATIONAL SAFETY AND HEALTH REGULATIONS" THE U.S. DEPARTMENT OF LABOR, AND WITH THE STATE OF CALIFORNIA DEPARTMENT OF INDUSTRIAL RELATIONS "CONSTRUCTION SAFETY ORDERS". THE CITY ENGINEER SHALL NOT BE RESPONSIBLE IN ANY WAY FOR THE CONTRACTOR OR SUBCONTRACTOR'S COMPLIANCE WITH SAID REGULATIONS AND ORDERS. CONTRACTOR FURTHER AGREES THAT HE SHALL ASSUME SOLE COMPLETE RESPONSIBILITY FOR THE JOB SITE CONDITIONS DURING THE COURSE OF CONSTRUCTION OF THIS PROJECT, INCLUDING SAFETY OF ALL PERSONS AND PROPERTY. THIS REQUIREMENT SHALL APPLY CONTINUOUSLY AND NOT BE LIMITED TO THE NORMAL WORKING HOURS, AND THAT THE CONTRACTOR SHALL DEFEND, INDEMNIFY AND HOLD THE OWNER, THE CITY AND CITY ENGINEER HARMLESS FROM ANY AND ALL LIABILITY, REAL OR ALLEGED, IN CONNECTION WITH THE PERFORMANCE OF WORK ON THIS PROJECT, EXCEPTING LIABILITY ARISING FROM SOLE NEGLIGENCE OF THE OWNER OR ENGINEER.

**NPDES NOTES:**

- ERODED SEDIMENTS AND OTHER POLLUTANTS MUST BE RETAINED ON SITE AND MAY NOT BE TRANSPORTED FROM THE SITE VIA SHEET FLOW, SWALES, AREA DRAINS, NATURAL DRAINAGE COURSES, OR WIND.
- STOCKPILES OF EARTH AND OTHER CONSTRUCTION RELATED MATERIALS MUST BE PROTECTED FROM BEING TRANSPORTED FROM THE SITE BY THE FORCES OF WIND OR WATER.
- FUELS, OILS, SOLVENTS, AND OTHER TOXIC MATERIALS MUST BE STORED IN ACCORDANCE WITH THEIR LISTING AND ARE NOT TO CONTAMINATE THE SOIL AND SURFACE WATERS. ALL APPROVED STORAGE CONTAINERS ARE TO BE PROTECTED FROM THE WEATHER. SPILLS MUST BE CLEANED UP IMMEDIATELY AND DISPOSED OF IN A PROPER MANNER. SPILLS MAY NOT BE WASHED INTO THE DRAINAGE SYSTEM.
- EXCESS OR WASTE CONCRETE MAY NOT BE WASHED INTO THE PUBLIC RIGHT-OF-WAY OR ANY OTHER DRAINAGE SYSTEM. PROVISIONS SHALL BE MADE TO RETAIN CONCRETE WASTES ON SITE UNTIL THEY CAN BE DISPOSED OF AS SOLID WASTE.
- TRASH AND CONSTRUCTION RELATED SOLID WASTES MUST BE DEPOSITED INTO A COVERED RECEPTACLE TO PREVENT CONTAMINATION BY RAINWATER AND DISPERSAL BY WIND.
- SEDIMENTS AND OTHER MATERIALS MAY NOT BE TRACKED FROM THE SITE BY VEHICLE TRAFFIC. ACCIDENTAL DEPOSITIONS MUST BE SWEEPED UP IMMEDIATELY AND MAY NOT BE WASHED DOWN BY RAIN OR OTHER MEANS.
- THE CONSTRUCTION WORK WITHIN CALTRANS RIGHT-OF-WAY MUST COMPLY WITH CONSTRUCTION SITE BEST MANAGEMENT PRACTICE (BMPs) AS PER CALTRANS PROJECT PLANNING AND DESIGN GUIDE (PPDG) DATED JULY 2016, INCLUDING LATER REVISIONS AND ADDENDUMS.
- WORKS RELATED TO DRAINAGE SYSTEM, WATER POLLUTION CONTROL AND EROSION CONTROL WITHIN THE STATE RIGHT-OF-WAY SHALL BE IN ACCORDANCE WITH THE LATEST CALTRANS STANDARD SPECIFICATIONS AND SPECIAL PROVISIONS. THE TEMPORARY DRAINAGE INLET PROTECTION SHALL COMPLY WITH THE CALTRANS STANDARD SPECIAL PROVISIONS, SSP 130620.
- THE FOLLOWING BMP'S AS OUTLINED IN, BUT NOT LIMITED TO, THE CALIFORNIA STORM WATER BEST MANAGEMENT PRACTICE HANDBOOK, CALIFORNIA STORM WATER QUALITY TASK FORCE, SACRAMENTO, CALIFORNIA 2003, OR THE LATEST REVISED EDITION, MAY APPLY DURING CONSTRUCTION (ADDITIONAL MEASURES MAY BE REQUIRED IF DEEMED APPROPRIATE BY INSPECTOR).

EC-2	PRESERVATION OF EXISTING VEGETATION
NS-2	DEWATERING OPERATIONS
NS-3	PAVING & GRINDING OPERATIONS
SC-21	VEHICLE AND EQUIPMENT CLEANING
SC-20	VEHICLE AND EQUIPMENT FUELING
SC-22	VEHICLE AND EQUIPMENT REPAIRS
SE-8	SAND BAG BARRIER
SE-10	STORM DRAIN INLET PROTECTION
WE-1	WIND EROSION CONTROL
WM-1	MATERIAL DELIVERY AND STORAGE
WM-2	MATERIAL USE
WM-4	SPILL PREVENTION AND CONTROL
WM-5	SOLID WASTE MANAGEMENT
WM-8	CONCRETE WASTE MANAGEMENT
WM-9	SANITARY / SEPTIC WASTE MANAGEMENT

**LIST OF STANDARD DRAWINGS:**

**SPPWC STANDARD PLANS 2021 EDITION:**

112-2	CURB AND SIDEWALK JOINTS
113-2	SIDEWALK & DRIVEWAY REPLACEMENT
122-3	LONGITUDINAL GUTTER
130-3	ALLEY INTERSECTION
132-4	CONCRETE PAVEMENT REPLACEMENT
133-4	ASPHALT CONCRETE PAVEMENT REPLACEMENT
134-3	CONCRETE PAVEMENT JOINT DETAILS
205-3	SEWER MANHOLE ADJUSTMENT
206-2	MANHOLE RAISING RINGS

**LEGEND & ABBREVIATIONS**

	SIGNALIZED INTERSECTION
	DRAINAGE MANHOLE
	ELECTRICAL MANHOLE
	SANITARY SEWER MANHOLE
	FIRE HYDRANT
	WATER METER
	WATER VALVE
	GAS VALVE
	STREET LIGHT
	POWER POLE
	BOLLARD
	BLOCK WALL
	CITY BOUNDARY
	RIGHT-OF-WAY
	CHAIN LINK FENCE
	ELECTRICAL LINE
	GAS LINE
	WATER LINE
	SEWER LINE
	STORM DRAIN LINE
	TELEPHONE LINE
AC	ASPHALT CONCRETE
APPROX.	APPROXIMATELY
BCR	BEGINNING OF CURB RETURN
BW	BACK OF WALK
CAB	CRUSHED AGGREGATE BASE
CB	CATCH BASIN
CL	CENTER LINE
OMB	CRUSHED MISCELLANEOUS BASE
CONC	CONCRETE
EGR	END OF CURB RETURN
EG	EDGE OF GUTTER
EL	ELEVATION
E/O	EAST OF
EX., EXIST.	EXISTING
FH	FIRE HYDRANT
FL	FLOW LINE
FS	FINISHED SURFACE
GB	GRADE BREAK
M.W.D	METROPOLITAN WATER DISTRICT
N/O	NORTH OF
PA	PLANTING AREA
PB	PULL BOX
PCC	PORTLAND CEMENT CONCRETE
PL	PROPERTY LINE
PROP.	PROPOSED
RCB	REINFORCED CONCRETE BOX
R/W	RIGHT-OF-WAY
S	SLOPE, SEWER
SD	STORM DRAIN
S/O	SOUTH OF
STA	STATION
STA GR	STRAIGHT GRADE
VAR	VARIES
W/O	WEST OF
(203.10)	EXISTING ELEVATION
203.10	PROPOSED ELEVATION

**GENERAL CONSTRUCTION NOTES:**

- PROVIDE ACCESS AT ALL TIME AND PROTECT-IN-PLACE EXISTING UTILITIES.
- PROTECT-IN-PLACE EXISTING SURFACE AND UNDERGROUND UTILITIES, POLES, VALVES, COVERS, AND OTHER MISCELLANEOUS FACILITIES, UNLESS OTHERWISE INDICATED.
- BEFORE STARTING WORK, THE CONTRACTOR SHALL VERIFY THE LOCATIONS OF ALL EXISTING UTILITIES BY CONTACTING UNDERGROUND SERVICE ALERT BY CALLING 811, AT LEAST 72 HOURS IN ADVANCE.
- THE CONTRACTOR SHALL NOTIFY THE CITY ENGINEER AT LEAST 48 HOURS PRIOR TO START OF FIELD REMOVALS.
- THE CONTRACTOR SHALL VERIFY THE EXACT LIMITS AND LOCATION OF SAWCUTTING TO REMOVE AND REPLACE EXISTING AC AND/OR CONCRETE WITH THE CITY ENGINEER.
- THE CONTRACTOR SHALL ADJUST/REPLACE EXISTING IRRIGATION SYSTEM WITHIN PARKWAY IN THE PROPOSED IMPROVEMENT AREAS.
- GRIND OFF AC FROM EXISTING CONCRETE GUTTER SURFACE PER CITY ENGINEER'S INSTRUCTION, HAUL AWAY AND DISPOSE.
- SPRAY WEEDS AND GRASS KILLER IN JOINTS/CRACKS AS DIRECTED WITHIN THE CONSTRUCTION AREA.
- REMOVE GRAFFITI FROM SIDEWALK.
- ESTABLISH/ RE-ESTABLISH SURVEY MONUMENT.
- PAVING JOINTS SHALL BE ON THE LANE LINE.
- THE CONTRACTOR SHALL CLEAR ANY BUSHES OR TREES WITHIN THE CONSTRUCTION AREA.

**CONSTRUCTION NOTES:**

- P** PROTECT-IN-PLACE

**REMOVALS**

- SAWCUT AND REMOVE EXISTING CONCRETE ALLEY INTERSECTION, HAUL AWAY AND DISPOSE. LOCATION AND SIZE PER PLAN.
- SAWCUT AND REMOVE EXISTING CONCRETE LONGITUDINAL GUTTER, HAUL AWAY AND DISPOSE. LOCATION AND SIZE PER PLAN.
- SAWCUT AND REMOVE EXISTING AC PAVEMENT BASE, AND NATIVE SOIL TO PROVIDE CLEAR DEPTH FOR NEW IMPROVEMENT, HAUL AWAY AND DISPOSE.
- SAWCUT AND REMOVE EXISTING CONCRETE PAVEMENT, HAUL AWAY AND DISPOSE. LOCATION AND SIZE PER PLAN.
- SAWCUT AND REMOVE EXISTING CONCRETE SIDEWALK, HAUL AWAY AND DISPOSE. LOCATION AND SIZE PER PLAN.

**PCC WORK AND OTHER RELATED WORK**

- CONSTRUCT CONCRETE ALLEY INTERSECTION PER SPPWC STD. PLAN 130-3.
- CONSTRUCT 8" THICK CONCRETE LONGITUDINAL GUTTER PER SPPWC STD. PLAN 122-3, OR MATCH EXISTING PER CITY ENGINEER'S INSTRUCTION.
- CONSTRUCT 2" X 6" WEATHER TREATED REDWOOD HEADER PER DETAIL ON SHEET C-3.
- CONSTRUCT CONCRETE PAVEMENT, 8" THICK, PER SPPWC STD. PLAN 132-4 AND 134-3, OR MATCH EXISTING PER CITY ENGINEER'S INSTRUCTION.
- CONSTRUCT CONCRETE SIDEWALK, 4"-THICK, PER SPPWC STD. PLANS 112-2 AND 113-2.

**PAVEMENT**

- PROVIDE AND PLACE 6"-THICK CRUSHED MISCELLANEOUS BASE (CMB).
- CONSTRUCT 2"-THICK AC BASE COURSE TYPE B-PG 64-10.
- CONSTRUCT 2"-THICK CONVENTIONAL AC OVERLAY TYPE C2-PG 64-10.

**ADJUSTMENT/RELOCATION**

- ADJUST EXISTING UTILITY MANHOLE AND COVER TO FINISHED GRADE.
- ADJUST EXISTING WATER VALVE CAN AND COVER TO FINISHED GRADE.
- ADJUST EXISTING WATER METER BOX AND COVER TO FINISHED GRADE, REPLACE BROKEN COVER/BOX.

**LEGEND:**

	REMOVE AND RECONSTRUCT CONCRETE SIDEWALK
	REMOVE AND RECONSTRUCT AC PAVEMENT
	REMOVE AND RECONSTRUCT CONCRETE LONGITUDINAL GUTTER
	REMOVE AND RECONSTRUCT CONCRETE ALLEY INTERSECTION
	REMOVE AND RECONSTRUCT CONCRETE PAVEMENT
	CRUSHED MISCELLANEOUS BASE (CMB)
	AC OVERLAY

INFRASTRUCTURE ENGINEERS 6027 295 - Various Alleys Imp Project (FY 21-22) - Design Phase Measure R\CAD\Sheets\82-GEN-VAI-6027295\_8/15/2023 1:06:33 PM Shawnt Babakhanian



**UNDERGROUND SERVICE ALERT OF SOUTHERN CALIFORNIA**

ATTENTION IS DIRECTED TO THE POSSIBLE EXISTENCE OF UNDERGROUND FACILITIES NOT SHOWN OR NOT IDENTIFIED IN A LOCATION DIFFERENT FROM WHAT IS SHOWN ON THE PLANS OR IN THE SPECIAL PROVISIONS. THE CONTRACTOR SHALL TAKE STEPS TO ASCERTAIN THE EXACT LOCATION OF ALL UNDERGROUND FACILITIES PRIOR TO START OF WORK THAT MAY DAMAGE SUCH FACILITIES OR INTERFERE WITH THEIR SERVICES. BEFORE EXCAVATION, THE CONTRACTOR SHALL VERIFY THE LOCATION OF UNDERGROUND UTILITIES BY CONTACTING UNDERGROUND UTILITIES SERVICE ALERT AT 1 (800) 422-4133.

REVISIONS			
NO.	DATE	BY	DESCRIPTION

UNDER THE SUPERVISION OF:

**INFRASTRUCTURE ENGINEERS**

3860 Sagem Street, Suite 250  
Brea, CA 92821  
Tel: (714) 940-0100  
Fax: (714) 940-0700  
www.infrastructure-engineers.com

DESIGNED BY: J. SANTILLAN  
DRAWN BY: J. SANTILLAN  
CHECKED BY: M. FARAHANI DATE: 8/14/23

**CITY OF BELL GARDENS**

Department of Public Works

**VARIOUS ALLEYS IMPROVEMENTS**

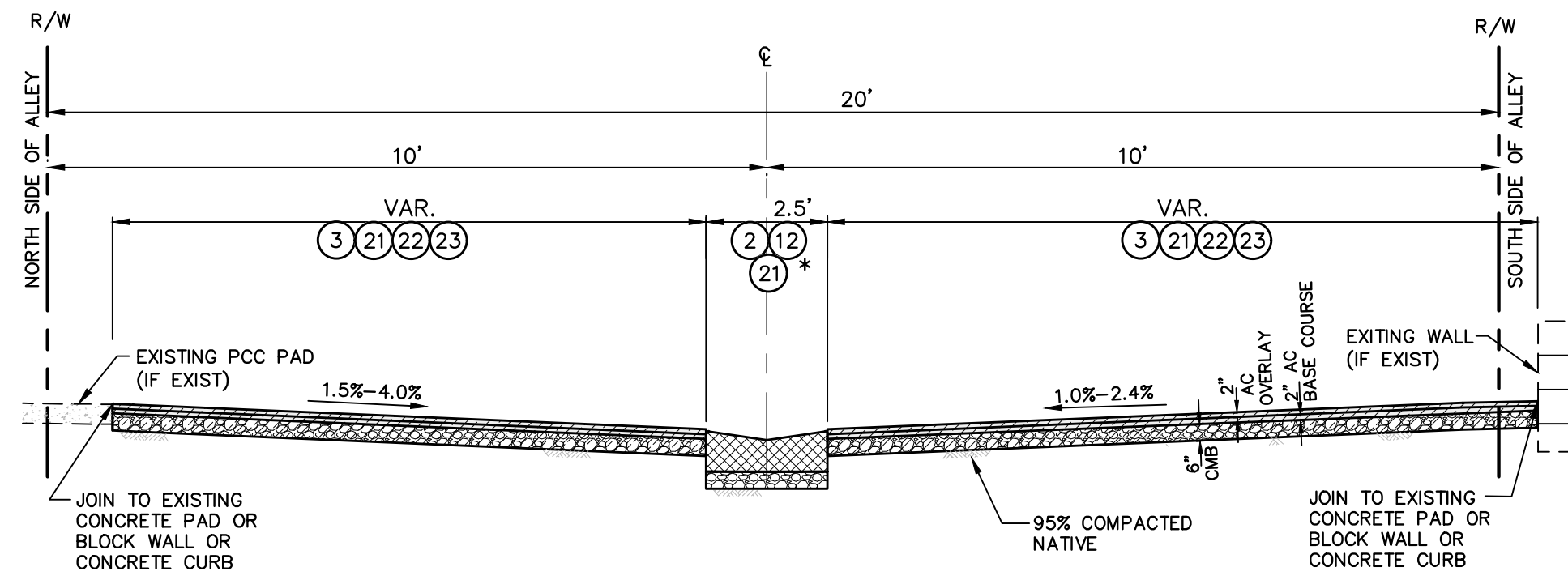
**GENERAL NOTES, CONSTRUCTION NOTES, LEGEND AND ABBREVIATIONS**

Drawing Number:

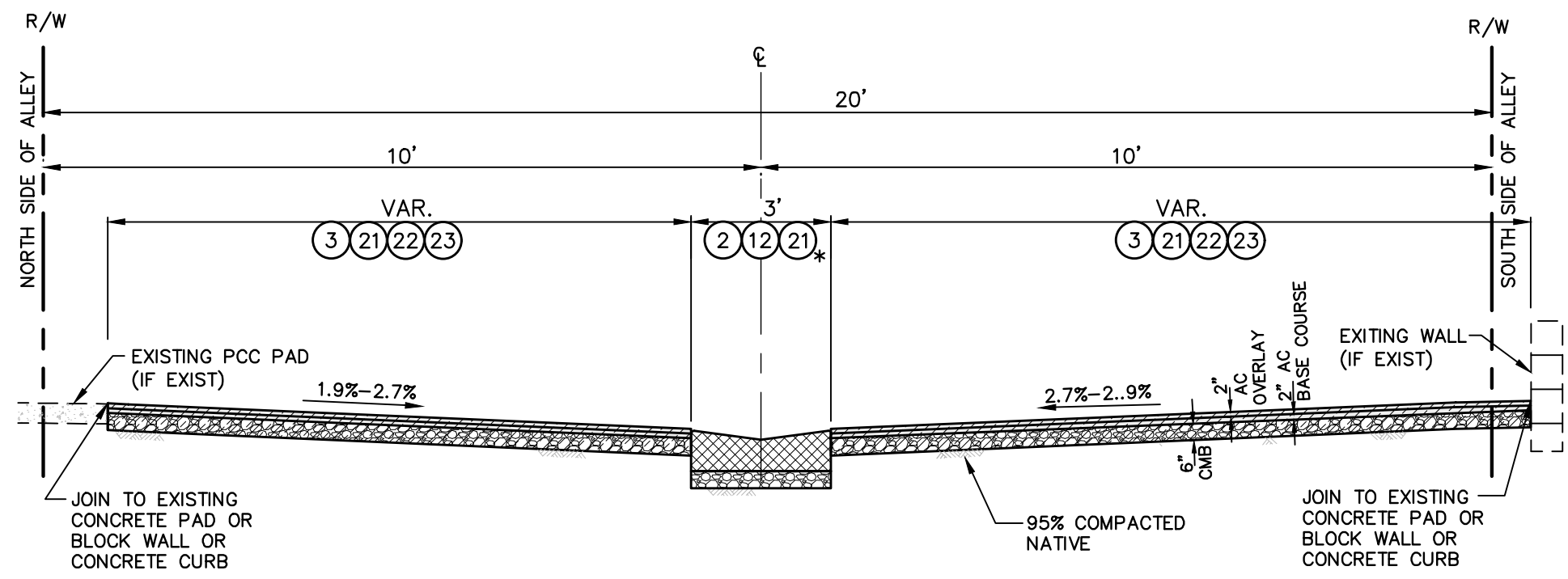
**C-2**

Sheet 2 of 5

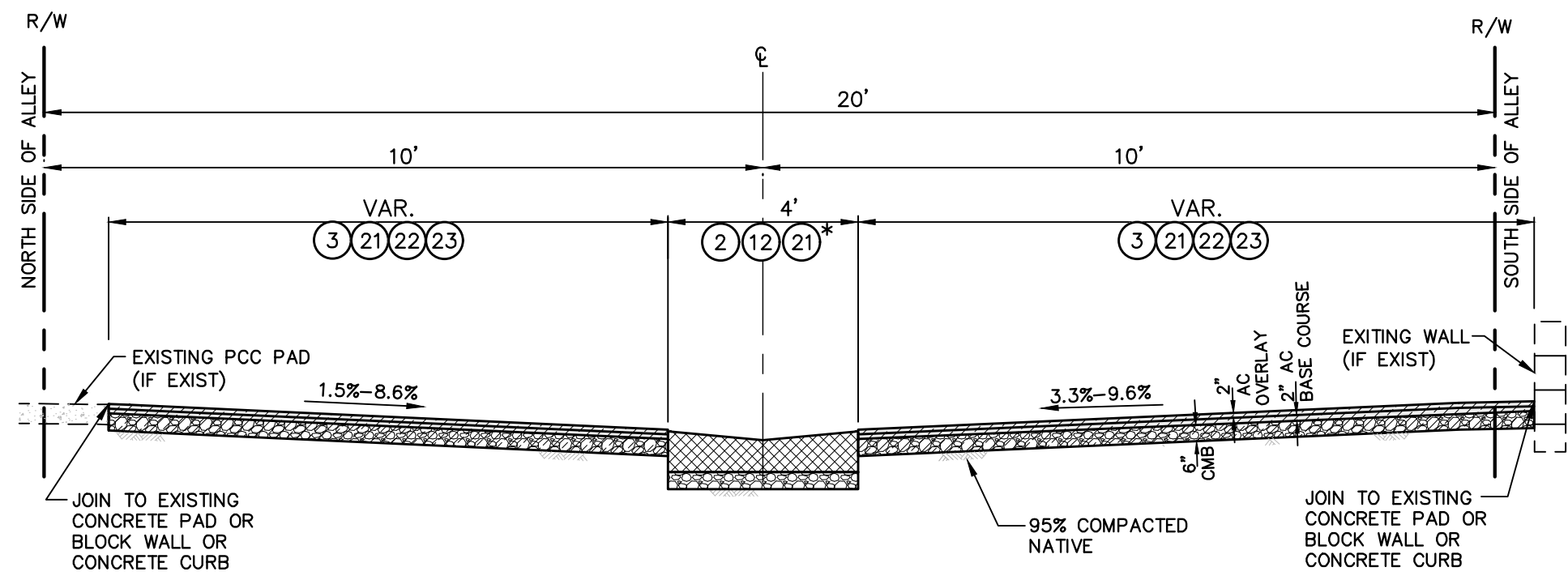
VARIOUS ALLEYS IMPROVEMENTS PROJECT (FY 2021-2022)



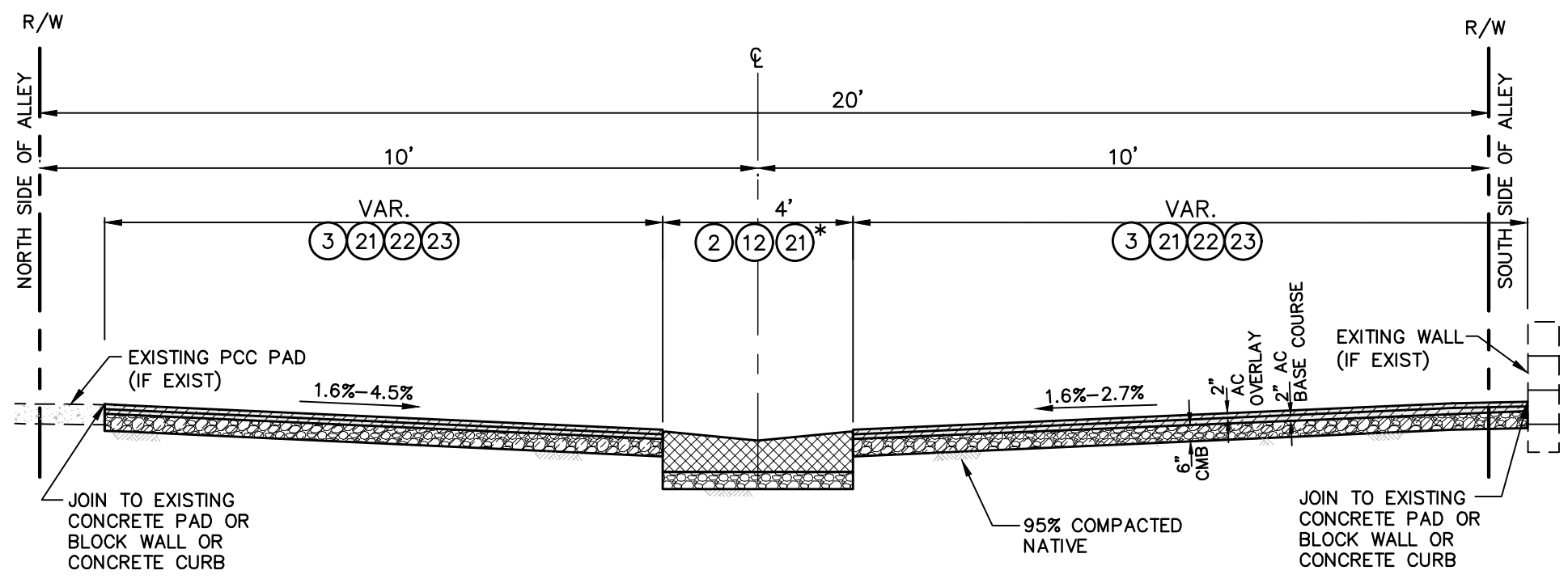
TYPICAL SECTION - ALLEY 1  
NOT TO SCALE



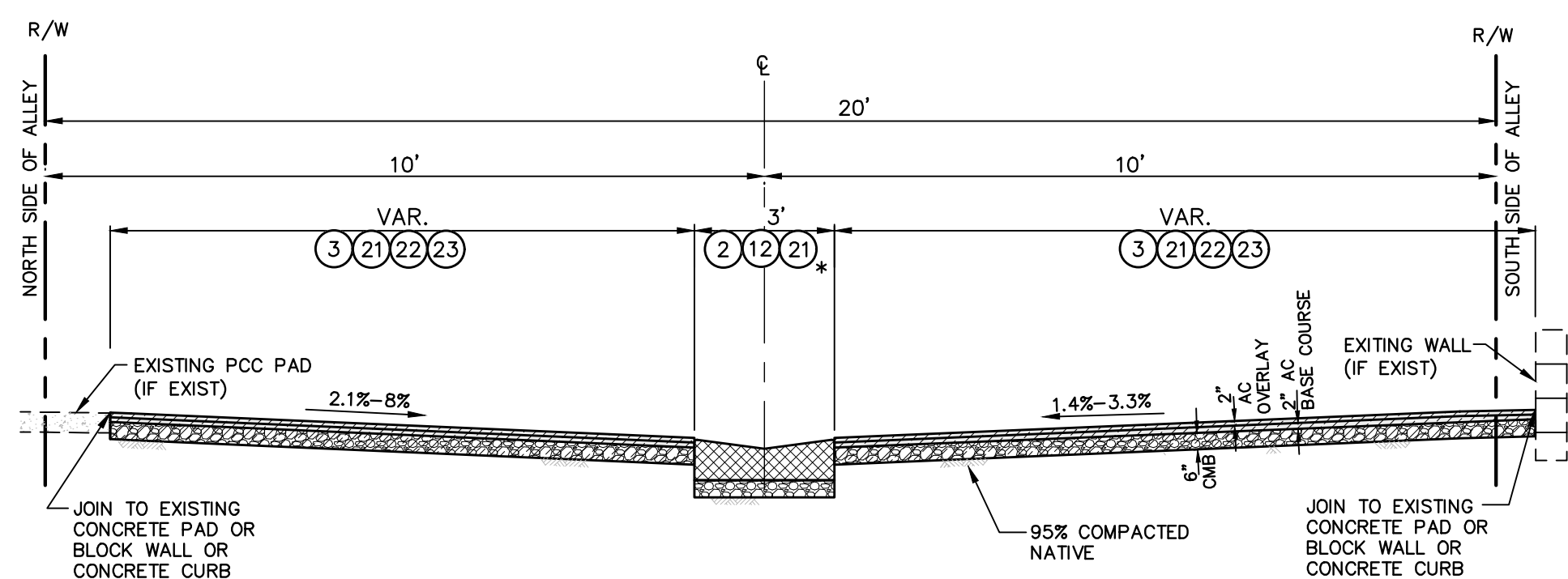
TYPICAL SECTION - ALLEY 4  
NOT TO SCALE



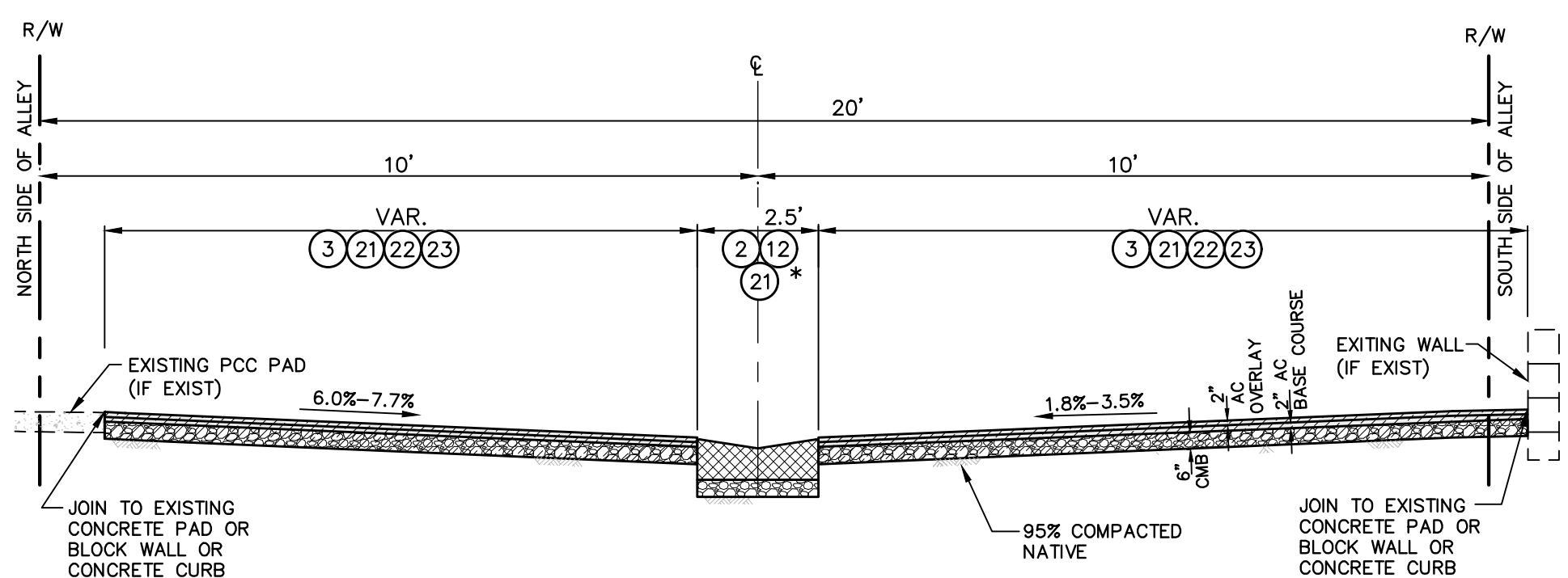
TYPICAL SECTION - ALLEY 2  
NOT TO SCALE



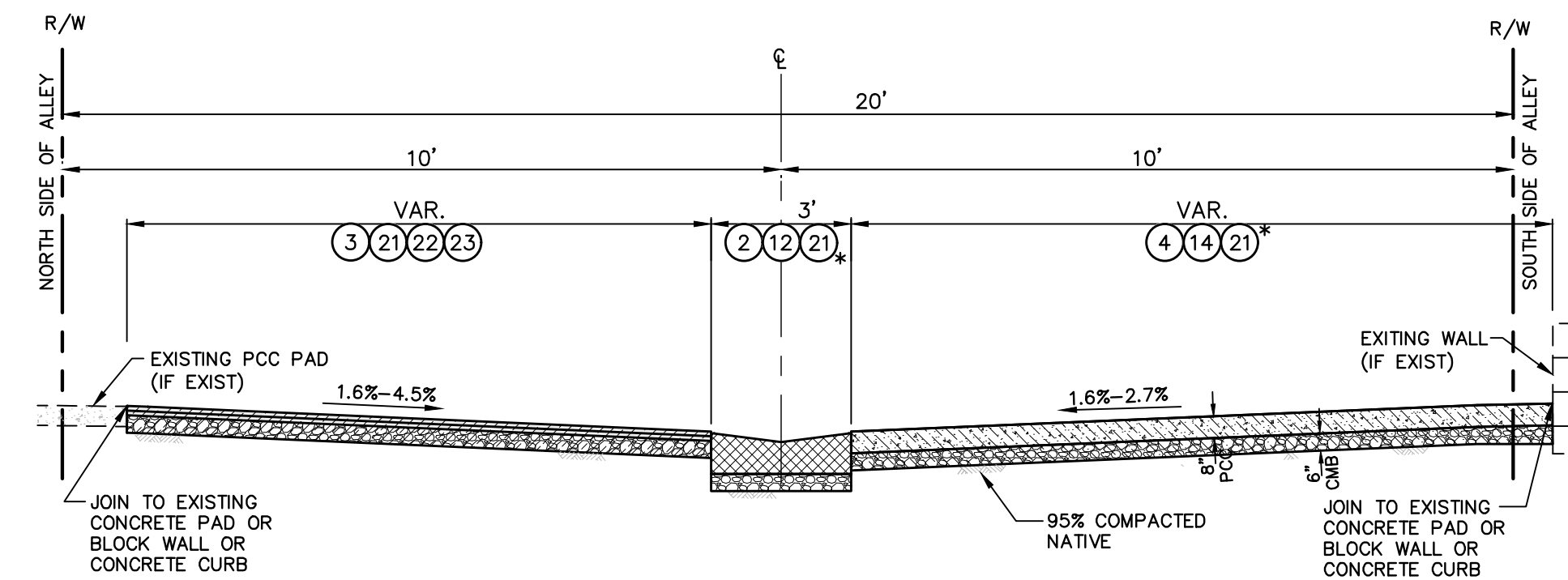
TYPICAL SECTION - ALLEY 5  
NOT TO SCALE



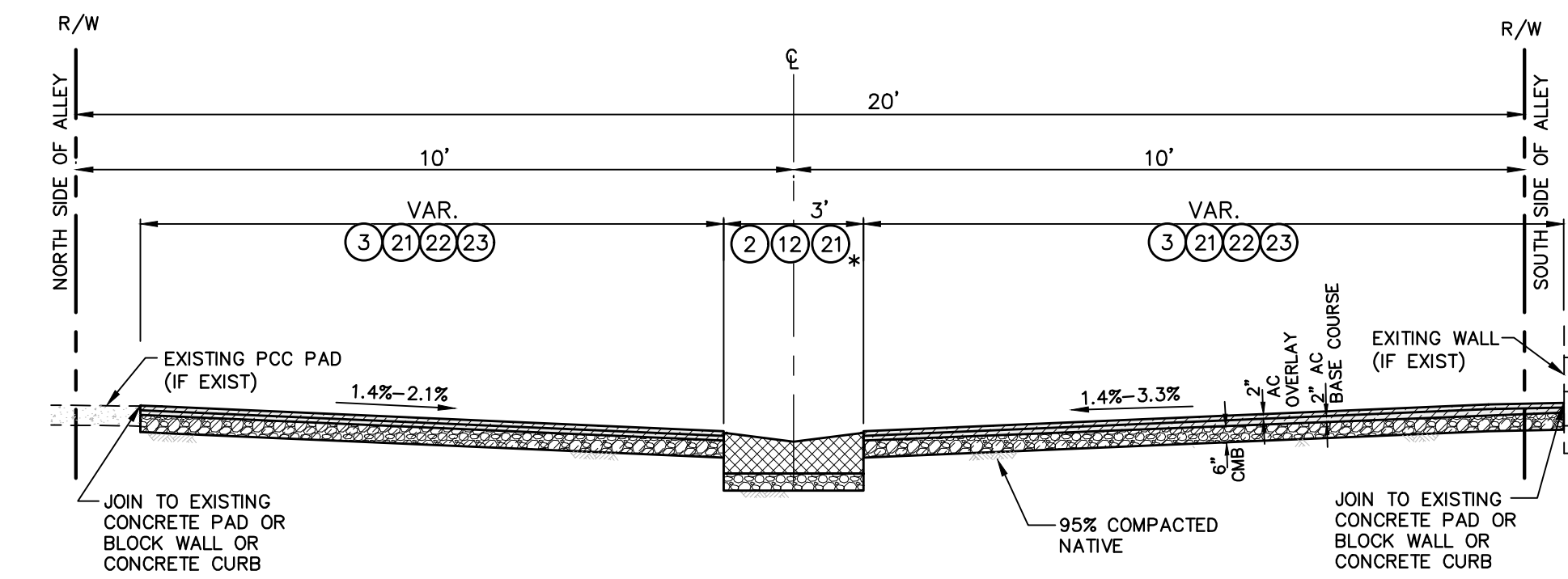
TYPICAL SECTION - ALLEY 3  
NOT TO SCALE



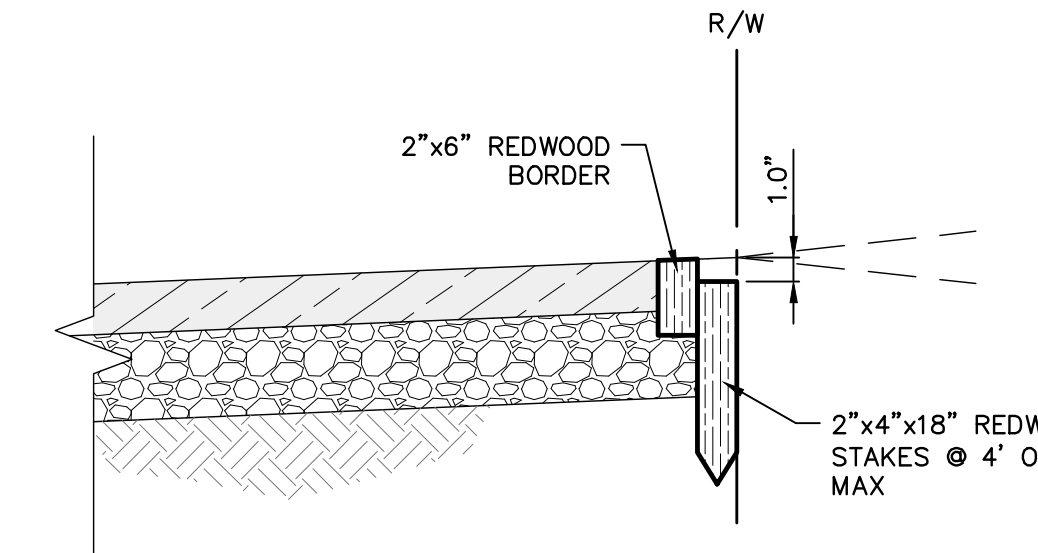
TYPICAL SECTION - ALLEY A6  
ADDITIVE "A"  
NOT TO SCALE



PCC RECONSTRUCTION SECTION - ALLEY 4  
NOT TO SCALE



TYPICAL SECTION - ALLEY 7B  
ADDITIVE "B"  
NOT TO SCALE



REDWOOD HEADER DETAIL  
NOT TO SCALE

- GENERAL CONSTRUCTION NOTES:**
1. PROVIDE ACCESS AT ALL TIME AND PROTECT-IN-PLACE EXISTING UTILITIES.
  2. PROTECT-IN-PLACE EXISTING SURFACE AND UNDERGROUND UTILITIES, POLES, VALVES, COVERS, AND OTHER MISCELLANEOUS FACILITIES, UNLESS OTHERWISE INDICATED.
  3. BEFORE STARTING WORK, THE CONTRACTOR SHALL VERIFY THE LOCATIONS OF ALL EXISTING UTILITIES BY CONTACTING UNDERGROUND SERVICE ALERT BY CALLING 811, AT LEAST 72 HOURS IN ADVANCE.
  4. THE CONTRACTOR SHALL NOTIFY THE CITY ENGINEER AT LEAST 48 HOURS PRIOR TO START OF FIELD REMOVALS.
  5. THE CONTRACTOR SHALL VERIFY THE EXACT LIMITS AND LOCATION OF SAWCUTTING TO REMOVE AND REPLACE EXISTING AC AND/OR CONCRETE WITH THE CITY ENGINEER.
  6. THE CONTRACTOR SHALL ADJUST/REPLACE EXISTING IRRIGATION SYSTEM WITHIN PARKWAY IN THE PROPOSED IMPROVEMENT AREAS.
  7. GRIND OFF AC FROM EXISTING CONCRETE GUTTER SURFACE PER CITY ENGINEER'S INSTRUCTION, HAUL AWAY AND DISPOSE.
  8. SPRAY WEEDS AND GRASS KILLER IN JOINTS/CRACKS AS DIRECTED WITHIN THE CONSTRUCTION AREA.
  9. REMOVE GRAFFITI FROM SIDEWALK.
  10. ESTABLISH/ RE-ESTABLISH SURVEY MONUMENT.
  11. PAVING JOINTS SHALL BE ON THE LANE LINE.
  12. THE CONTRACTOR SHALL CLEAR ANY BUSHES OR TREES WITHIN THE CONSTRUCTION AREA.

- CONSTRUCTION NOTES:**
13. PROTECT-IN-PLACE
- REMOVALS**
1. SAWCUT AND REMOVE EXISTING CONCRETE ALLEY INTERSECTION, HAUL AWAY AND DISPOSE. LOCATION AND SIZE PER PLAN.
  2. SAWCUT AND REMOVE EXISTING CONCRETE LONGITUDINAL GUTTER, HAUL AWAY AND DISPOSE. LOCATION AND SIZE PER PLAN.
  3. SAWCUT AND REMOVE EXISTING AC PAVEMENT BASE, AND NATIVE SOIL TO PROVIDE CLEAR DEPTH FOR NEW IMPROVEMENT, HAUL AWAY AND DISPOSE.
  4. SAWCUT AND REMOVE EXISTING CONCRETE PAVEMENT, HAUL AWAY AND DISPOSE. LOCATION AND SIZE PER PLAN.
  5. SAWCUT AND REMOVE EXISTING CONCRETE SIDEWALK, HAUL AWAY AND DISPOSE. LOCATION AND SIZE PER PLAN.

- PCC WORK AND OTHER RELATED WORK**
11. CONSTRUCT CONCRETE ALLEY INTERSECTION PER SPPWC STD. PLAN 130-3.
  12. CONSTRUCT 8" THICK CONCRETE LONGITUDINAL GUTTER PER SPPWC STD. PLAN 122-3, OR MATCH EXISTING PER CITY ENGINEER'S INSTRUCTION.
  13. CONSTRUCT 2" X 6" WEATHER TREATED REDWOOD HEADER PER DETAIL ON SHEET C-3.
  14. CONSTRUCT CONCRETE PAVEMENT, 8" THICK, PER SPPWC STD. PLAN 132-4 AND 134-3, OR MATCH EXISTING PER CITY ENGINEER'S INSTRUCTION.
  15. CONSTRUCT CONCRETE SIDEWALK, 4"-THICK, PER SPPWC STD. PLANS 112-2 AND 113-2.

- PAVEMENT**
21. PROVIDE AND PLACE 6"-THICK CRUSHED MISCELLANEOUS BASE (CMB).
  22. CONSTRUCT 2"-THICK AC BASE COURSE TYPE B-PG 64-10.
  23. CONSTRUCT 2"-THICK CONVENTIONAL AC OVERLAY TYPE C2-PG 64-10.
- ADJUSTMENT/RELOCATION**
31. ADJUST EXISTING UTILITY MANHOLE AND COVER TO FINISHED GRADE.
  32. ADJUST EXISTING WATER VALVE CAN AND COVER TO FINISHED GRADE.
  33. ADJUST EXISTING WATER METER BOX AND COVER TO FINISHED GRADE, REPLACE BROKEN COVER/BOX.

- LEGEND:**
- REMOVE AND RECONSTRUCT CONCRETE SIDEWALK
  - REMOVE AND RECONSTRUCT AC PAVEMENT
  - REMOVE AND RECONSTRUCT CONCRETE LONGITUDINAL GUTTER
  - REMOVE AND RECONSTRUCT CONCRETE ALLEY INTERSECTION
  - REMOVE AND RECONSTRUCT CONCRETE PAVEMENT
  - CRUSHED MISCELLANEOUS BASE (CMB)
  - AC OVERLAY

ENGINEERS CONTRACT BY BEFORE YOU DIG 811 SAFE DIGGING PARTNER  
 INFRASTRUCTURE ENGINEERS 6027 295 Various Alleys Imp Project (FY 21-22) - Design Phase Measure R\CAD\Sheets\603-TC3-VA1-6027295\_8/15/2023 1:07:04 PM Shownt Babakhtian  
 C:\Bell Gardens\6027\_295-Variou Alleys Imp Project (FY 21-22) - Design Phase Measure R\CAD\Sheets\603-TC3-VA1-6027295\_8/15/2023 1:07:04 PM Shownt Babakhtian

**UNDERGROUND SERVICE ALERT OF SOUTHERN CALIFORNIA**

ATTENTION IS DIRECTED TO THE POSSIBLE EXISTENCE OF UNDERGROUND FACILITIES NOT SHOWN OR IN A LOCATION DIFFERENT FROM WHAT IS SHOWN ON THE PLANS OR IN THE SPECIAL PROVISIONS. THE CONTRACTOR SHALL TAKE STEPS TO ASCERTAIN THE EXACT LOCATION OF ALL UNDERGROUND FACILITIES PRIOR TO START OF WORK THAT MAY DAMAGE SUCH FACILITIES OR INTERFERE WITH THEIR SERVICES. BEFORE EXCAVATION, THE CONTRACTOR SHALL VERIFY THE LOCATION OF UNDERGROUND UTILITIES BY CONTACTING UNDERGROUND UTILITIES SERVICE ALERT AT 1 (800) 422-4133.

REVISIONS			
NO.	DATE	BY	DESCRIPTION

UNDER THE SUPERVISION OF:

**INFRASTRUCTURE ENGINEERS**  
 3580 Salton Street, Suite 250  
 Brea, CA 92821  
 Tel: (714) 940-0100  
 Fax: (714) 940-0700  
 www.infrastructure-engineers.com

DESIGNED BY: J. SANTILLAN  
 DRAWN BY: J. SANTILLAN  
 CHECKED BY: M. FARAHANI DATE: 8/14/23

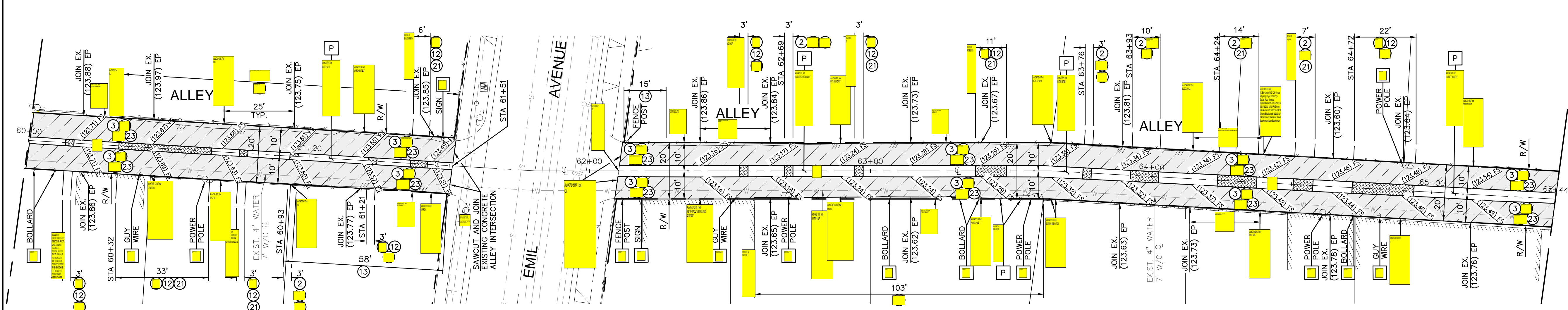
**CITY OF BELL GARDENS**

Department of Public Works

VARIOUS ALLEYS IMPROVEMENTS  
 TYPICAL CROSS SECTIONS AND DETAIL

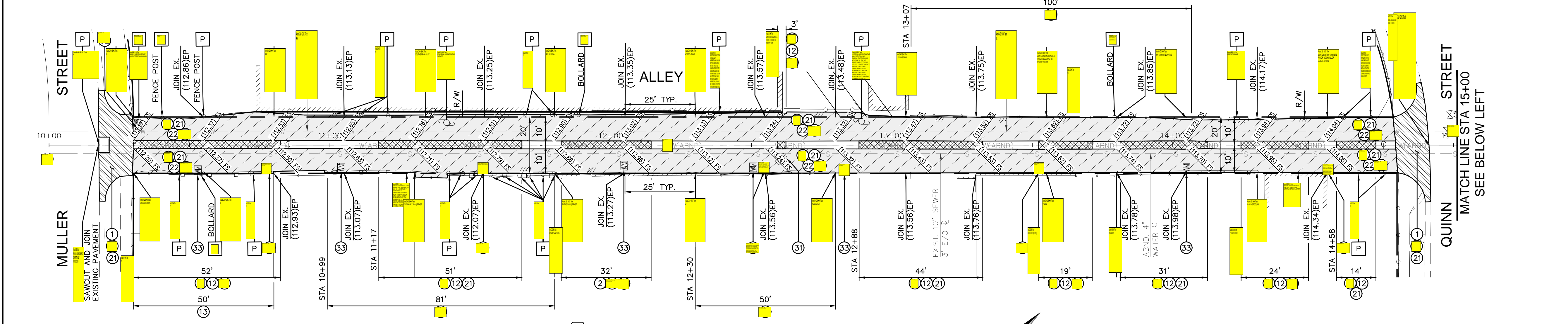
Drawing Number:  
**C-3**  
 Sheet 3 of 5  
 J. N. 6027.295

CONTRACT 811 BEFORE YOU DIG  
 SAFETY PARTNER  
 INFRASTRUCTURE ENGINEERS  
 3100 S. Main Street, Suite 250  
 Brea, CA 92621  
 Tel: (714) 940-0100  
 Fax: (714) 940-0700  
 www.infrastructure-engineers.com  
 DESIGNED BY: J. SANTILLAN  
 DRAWN BY: J. SANTILLAN  
 CHECKED BY: M. FARAHANI DATE: 8/14/23

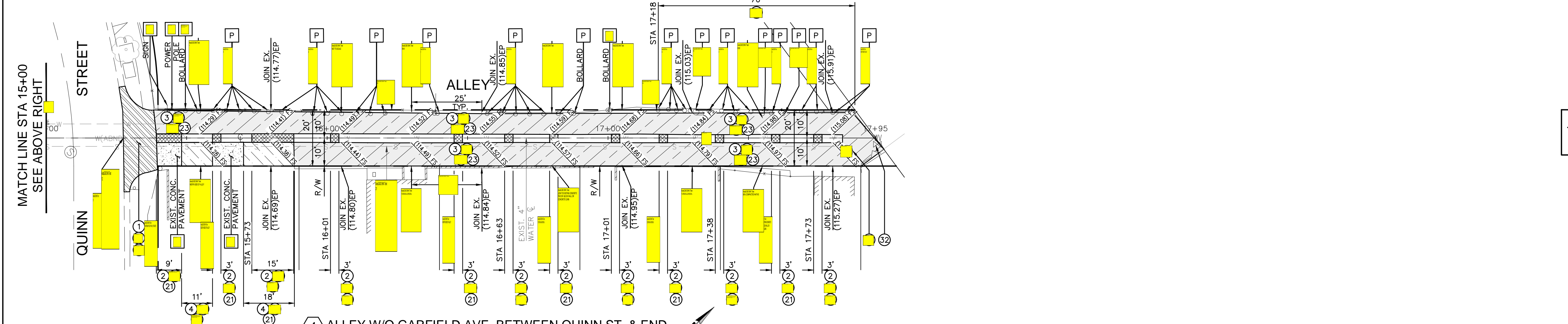


1 ALLEY N/O FLORENCE AVE. BETWEEN END & EMIL AVE.

2 ALLEY N/O FLORENCE AVE. BETWEEN EMIL AVE. & END



3 ALLEY W/O GARFIELD AVE. BETWEEN MULLER ST. & QUINN ST.

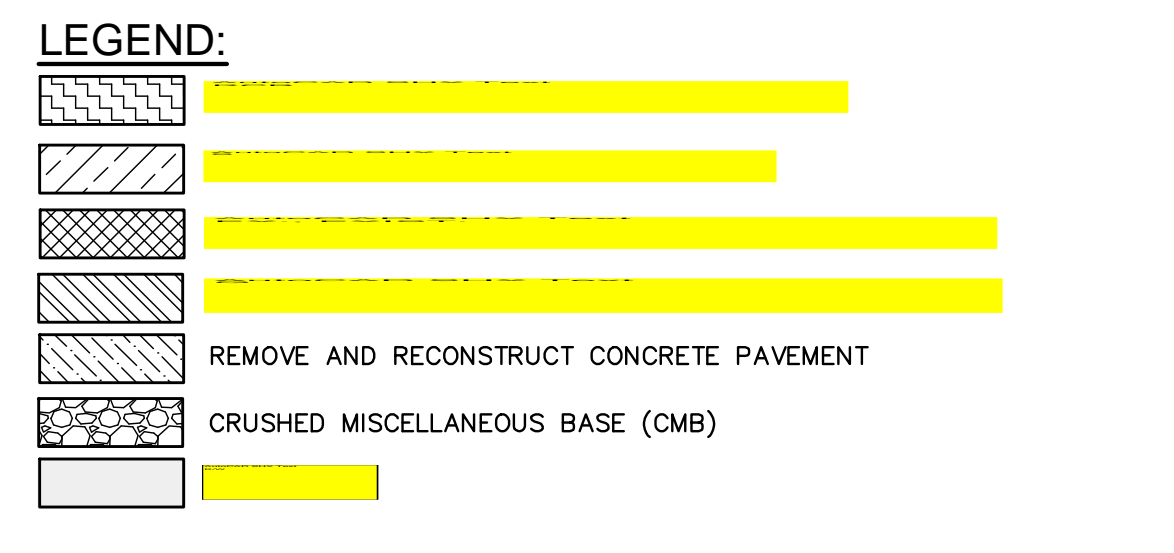


4 ALLEY W/O GARFIELD AVE. BETWEEN QUINN ST. & END

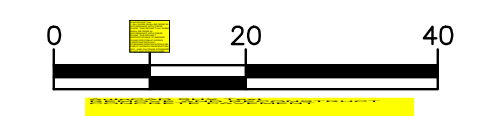
- GENERAL CONSTRUCTION NOTES:**
1. PROVIDE ACCESS AT ALL TIME AND PROTECT-IN-PLACE EXISTING UTILITIES.
  2. PROTECT-IN-PLACE EXISTING SURFACE AND UNDERGROUND UTILITIES, POLES, VALVES, COVERS, AND OTHER MISCELLANEOUS FACILITIES, UNLESS OTHERWISE INDICATED.
  3. BEFORE STARTING WORK, THE CONTRACTOR SHALL VERIFY THE LOCATIONS OF ALL EXISTING UTILITIES BY CONTACTING UNDERGROUND SERVICE ALERT BY CALLING 811, AT LEAST 72 HOURS IN ADVANCE.
  4. THE CONTRACTOR SHALL NOTIFY THE CITY ENGINEER AT LEAST 48 HOURS PRIOR TO START OF FIELD REMOVALS.
  5. THE CONTRACTOR SHALL VERIFY THE EXACT LIMITS AND LOCATION OF SAWCUTTING TO REMOVE AND REPLACE EXISTING AC AND/OR CONCRETE WITH THE CITY ENGINEER.
  6. THE CONTRACTOR SHALL ADJUST/REPLACE EXISTING IRRIGATION SYSTEM WITHIN PARKWAY IN THE PROPOSED IMPROVEMENT AREAS.
  7. GRIND OFF AC FROM EXISTING CONCRETE GUTTER SURFACE PER CITY ENGINEER'S INSTRUCTION, HAUL AWAY AND DISPOSE.
  8. SPRAY WEEDS AND GRASS KILLER IN JOINTS/CRACKS AS DIRECTED WITHIN THE CONSTRUCTION AREA.
  9. REMOVE GRAFFITI FROM SIDEWALK.
  10. ESTABLISH/ RE-ESTABLISH SURVEY MONUMENT.
  11. PAVING JOINTS SHALL BE ON THE LANE LINE.
  12. THE CONTRACTOR SHALL CLEAR ANY BUSHES OR TREES WITHIN THE CONSTRUCTION AREA.

- CONSTRUCTION NOTES:**
- P [Symbol] [Symbol]
- REMOVALS**
- 1 [Symbol] AutoCAD SHX Text
  - 2 [Symbol] AC
  - 3 [Symbol]
  - 4 [Symbol]
  - 5 [Symbol]

- PCC WORK AND OTHER RELATED WORK**
- 1 [Symbol] CONSTRUCT CONCRETE ALLEY INTERSECTION PER SPPWC STD. PLAN 130-3.
  - 2 [Symbol] CONSTRUCT 8" THICK CONCRETE LONGITUDINAL GUTTER PER SPPWC STD. PLAN 122-3, OR MATCH EXISTING PER CITY ENGINEER'S INSTRUCTION.
  - 3 [Symbol] CONSTRUCT 2" X 6" WEATHER TREATED REDWOOD HEADER PER DETAIL ON SHEET C-3.
  - 4 [Symbol] CONSTRUCT CONCRETE PAVEMENT, 8" THICK, PER SPPWC STD. PLAN 132-4 AND 134-3, OR MATCH EXISTING PER CITY ENGINEER'S INSTRUCTION.
  - 5 [Symbol] CONSTRUCT CONCRETE SIDEWALK, 4"-THICK, PER SPPWC STD. PLANS 112-2 AND 113-2.
- PAVEMENT**
- 1 [Symbol] PROVIDE AND PLACE 6"-THICK CRUSHED MISCELLANEOUS BASE (CMB).
  - 2 [Symbol] CONSTRUCT 2"-THICK AC BASE COURSE TYPE B-PG 64-10.
  - 3 [Symbol] CONSTRUCT 2"-THICK CONVENTIONAL AC OVERLAY TYPE C2-PG 64-10.
- ADJUSTMENT/RELOCATION**
- 1 [Symbol] ADJUST EXISTING UTILITY MANHOLE AND COVER TO FINISHED GRADE.
  - 2 [Symbol] ADJUST EXISTING WATER VALVE CAN AND COVER TO FINISHED GRADE.
  - 3 [Symbol] ADJUST EXISTING WATER METER BOX AND COVER TO FINISHED GRADE, REPLACE BROKEN COVER/BOX.



**NOTE:**  
EXISTING ELEVATIONS ARE THE PROPOSED ELEVATIONS, UNLESS OTHERWISE INDICATED.

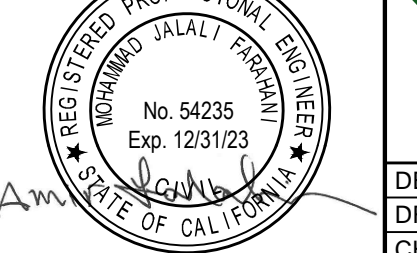


UNDERGROUND SERVICE ALERT OF SOUTHERN CALIFORNIA

REVISIONS

DATE	DESCRIPTION	APPROV.

UNDER THE SUPERVISION OF:



**INFRASTRUCTURE ENGINEERS**

3900 Saturn Street, Suite 250  
 Brea, CA 92621  
 Tel: (714) 940-0100  
 Fax: (714) 940-0700  
 www.infrastructure-engineers.com  
 DESIGNED BY: J. SANTILLAN  
 DRAWN BY: J. SANTILLAN  
 CHECKED BY: M. FARAHANI DATE: 8/14/23

**CITY OF BELL GARDENS**

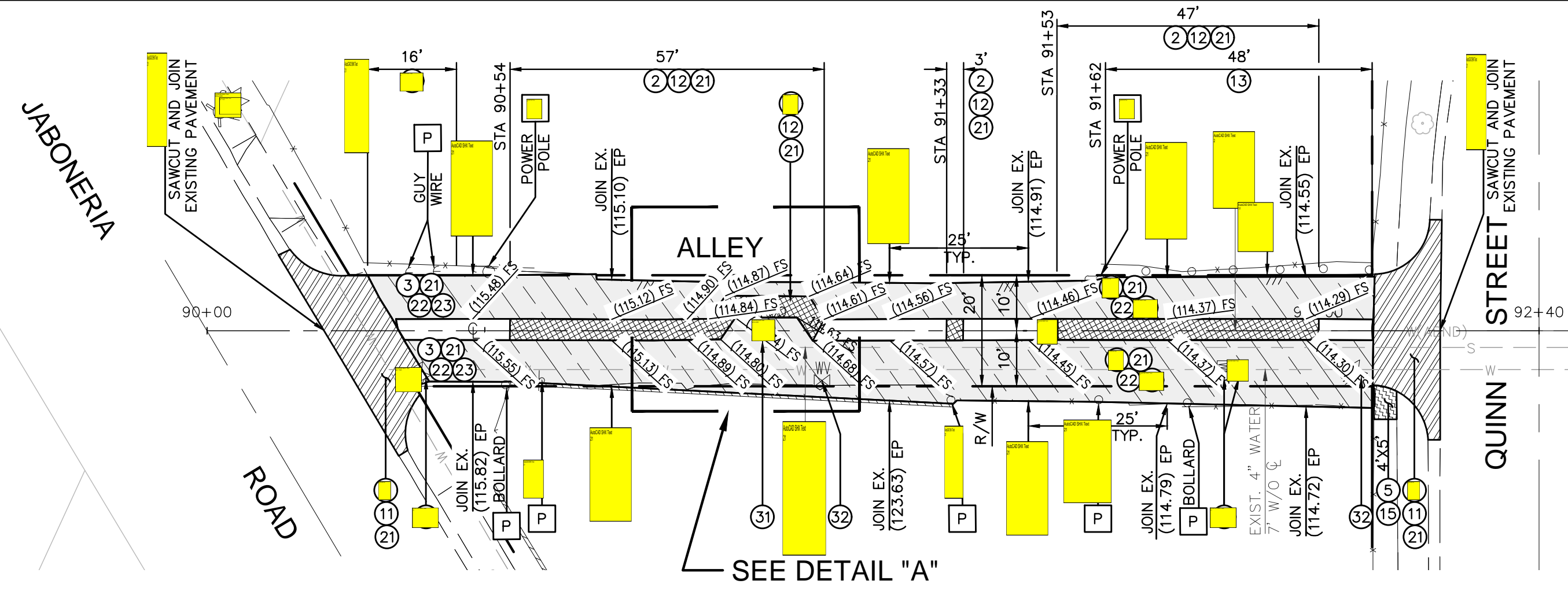


- VARIOUS ALLEYS IMPROVEMENTS**
- 1 ALLEY IMPROVEMENT PLAN AND DETAIL
  - 2 ALLEY N/O FLORENCE AVE. BETWEEN END & EMIL AVE.
  - 3 ALLEY N/O FLORENCE AVE. BETWEEN EMIL AVE. & END
  - 4 ALLEY W/O GARFIELD AVE. BETWEEN MULLER ST. & QUINN ST.
  - 5 ALLEY W/O GARFIELD AVE. BETWEEN QUINN ST & END

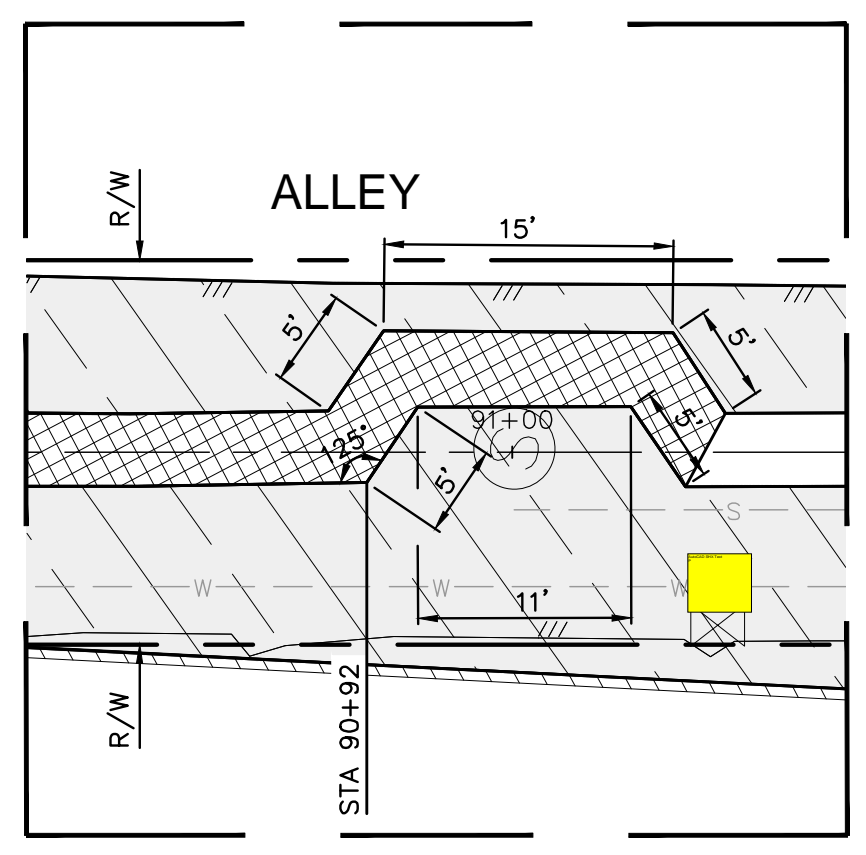
Drawing Number:

**C-4**

5



5 ALLEY E/O EASTERN AVE. BETWEEN JABONERIA RD. & QUINN ST.



DETAIL "A" HORIZONTAL CONTROL PLAN  
SCALE 1"=10'

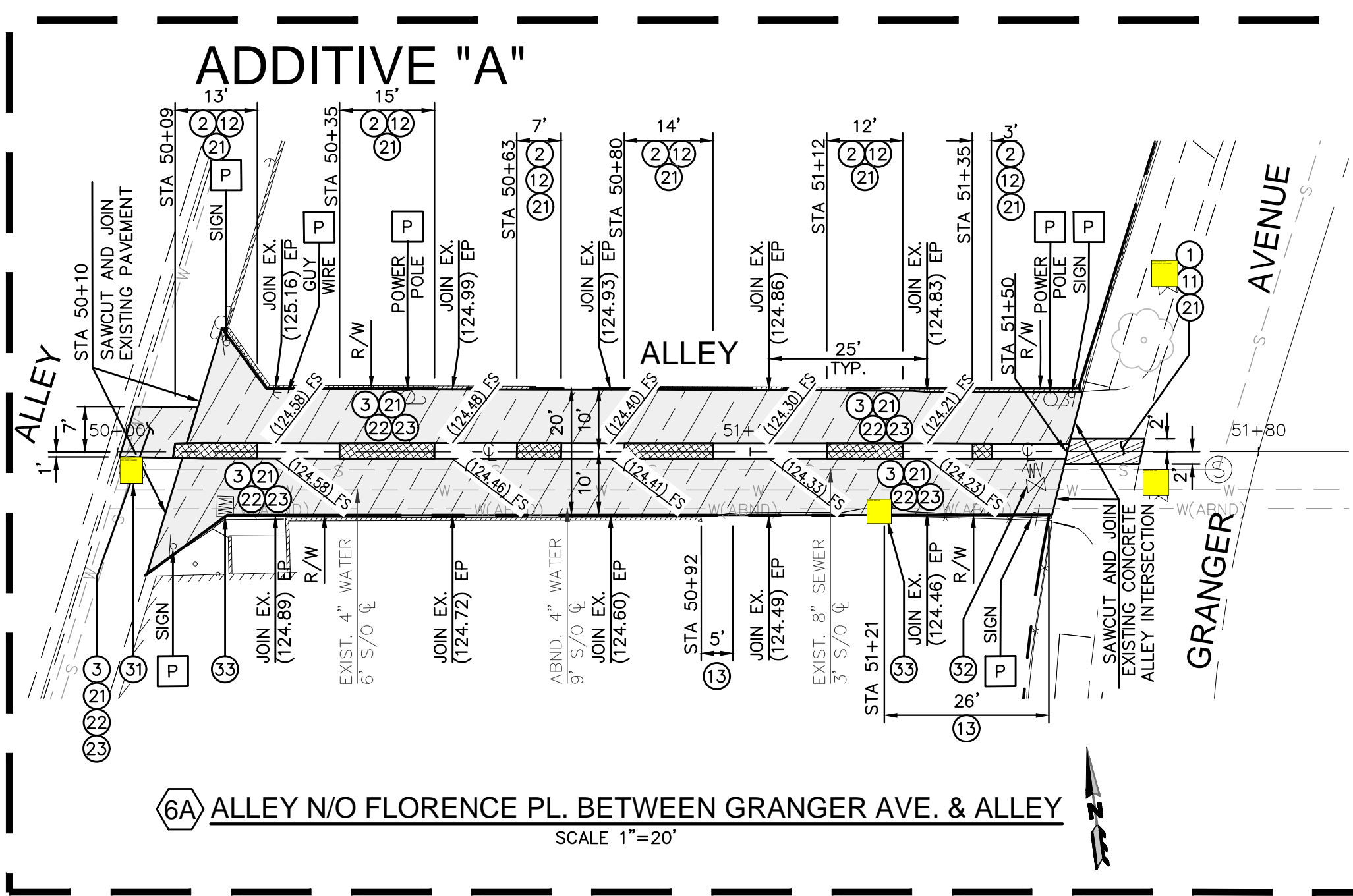
- GENERAL CONSTRUCTION NOTES:**
1. PROVIDE ACCESS AT ALL TIME AND PROTECT-IN-PLACE EXISTING UTILITIES.
  2. PROTECT-IN-PLACE EXISTING SURFACE AND UNDERGROUND UTILITIES, POLES, VALVES, COVERS, AND OTHER MISCELLANEOUS FACILITIES, UNLESS OTHERWISE INDICATED.
  3. BEFORE STARTING WORK, THE CONTRACTOR SHALL VERIFY THE LOCATIONS OF ALL EXISTING UTILITIES BY CONTACTING UNDERGROUND SERVICE ALERT BY CALLING 811, AT LEAST 72 HOURS IN ADVANCE.
  4. THE CONTRACTOR SHALL NOTIFY THE CITY ENGINEER AT LEAST 48 HOURS PRIOR TO START OF FIELD REMOVALS.
  5. THE CONTRACTOR SHALL VERIFY THE EXACT LIMITS AND LOCATION OF SAWCUTTING TO REMOVE AND REPLACE EXISTING AC AND/OR CONCRETE WITH THE CITY ENGINEER.
  6. THE CONTRACTOR SHALL ADJUST/REPLACE EXISTING IRRIGATION SYSTEM WITHIN PARKWAY IN THE PROPOSED IMPROVEMENT AREAS.
  7. GRIND OFF AC FROM EXISTING CONCRETE GUTTER SURFACE PER CITY ENGINEER'S INSTRUCTION, HAUL AWAY AND DISPOSE.
  8. SPRAY WEEDS AND GRASS KILLER IN JOINTS/CRACKS AS DIRECTED WITHIN THE CONSTRUCTION AREA.
  9. REMOVE GRAFFITI FROM SIDEWALK.
  10. ESTABLISH/ RE-ESTABLISH SURVEY MONUMENT.
  11. PAVING JOINTS SHALL BE ON THE LANE LINE.
  12. THE CONTRACTOR SHALL CLEAR ANY BUSHES OR TREES WITHIN THE CONSTRUCTION AREA.

- CONSTRUCTION NOTES:**
- P [Symbol]
- REMOVALS**
- 1 [Symbol] AutoCAD SHX Text
  - 2 [Symbol]
  - 3 [Symbol]
  - 4 [Symbol]
  - 5 [Symbol]

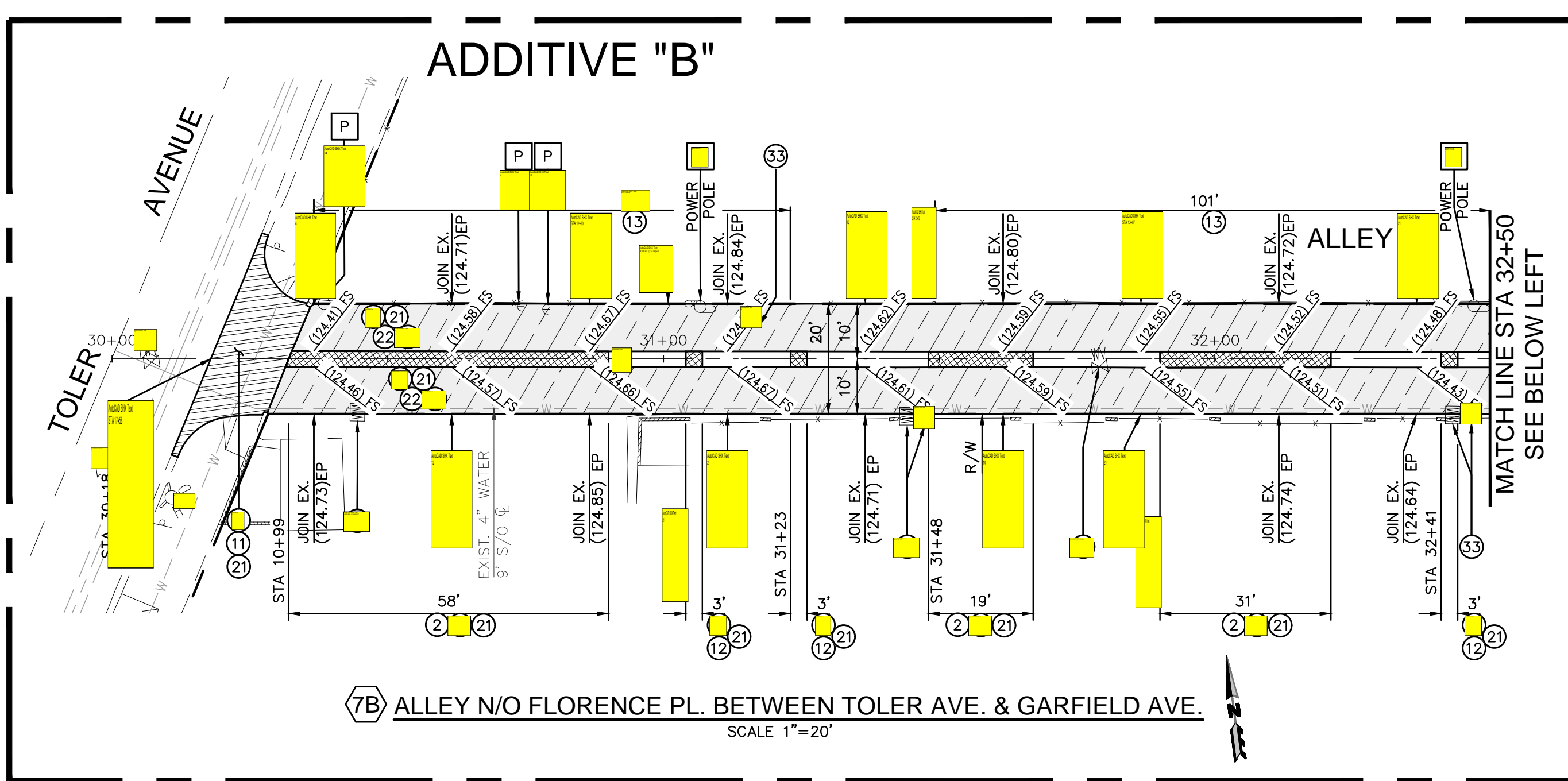
- PCC WORK AND OTHER RELATED WORK**
- 1 [Symbol] CONSTRUCT CONCRETE ALLEY INTERSECTION PER SPPWC STD. PLAN 130-3.
  - 2 [Symbol] CONSTRUCT 8" THICK CONCRETE LONGITUDINAL GUTTER PER SPPWC STD. PLAN 122-3, OR MATCH EXISTING PER CITY ENGINEER'S INSTRUCTION.
  - 3 [Symbol] CONSTRUCT 2" X 6" WEATHER TREATED REDWOOD HEADER PER DETAIL ON SHEET C-3.
  - 4 [Symbol] CONSTRUCT CONCRETE PAVEMENT, 8" THICK, PER SPPWC STD. PLAN 132-4 AND 134-3, OR MATCH EXISTING PER CITY ENGINEER'S INSTRUCTION.
  - 5 [Symbol] CONSTRUCT CONCRETE SIDEWALK, 4"-THICK, PER SPPWC STD. PLANS 112-2 AND 113-2.
- PAVEMENT**
- 1 [Symbol] PROVIDE AND PLACE 6"-THICK CRUSHED MISCELLANEOUS BASE (CMB).
  - 2 [Symbol] CONSTRUCT 2"-THICK AC BASE COURSE TYPE B-PG 64-10.
  - 3 [Symbol] CONSTRUCT 2"-THICK CONVENTIONAL AC OVERLAY TYPE C2-PG 64-10.
- ADJUSTMENT/RELOCATION**
- 1 [Symbol] ADJUST EXISTING UTILITY MANHOLE AND COVER TO FINISHED GRADE.
  - 2 [Symbol] ADJUST EXISTING WATER VALVE CAN AND COVER TO FINISHED GRADE.
  - 3 [Symbol] ADJUST EXISTING WATER METER BOX AND COVER TO FINISHED GRADE, REPLACE BROKEN COVER/BOX.

- LEGEND:**
- [Symbol] REMOVE AND RECONSTRUCT CONCRETE PAVEMENT
  - [Symbol] CRUSHED MISCELLANEOUS BASE (CMB)

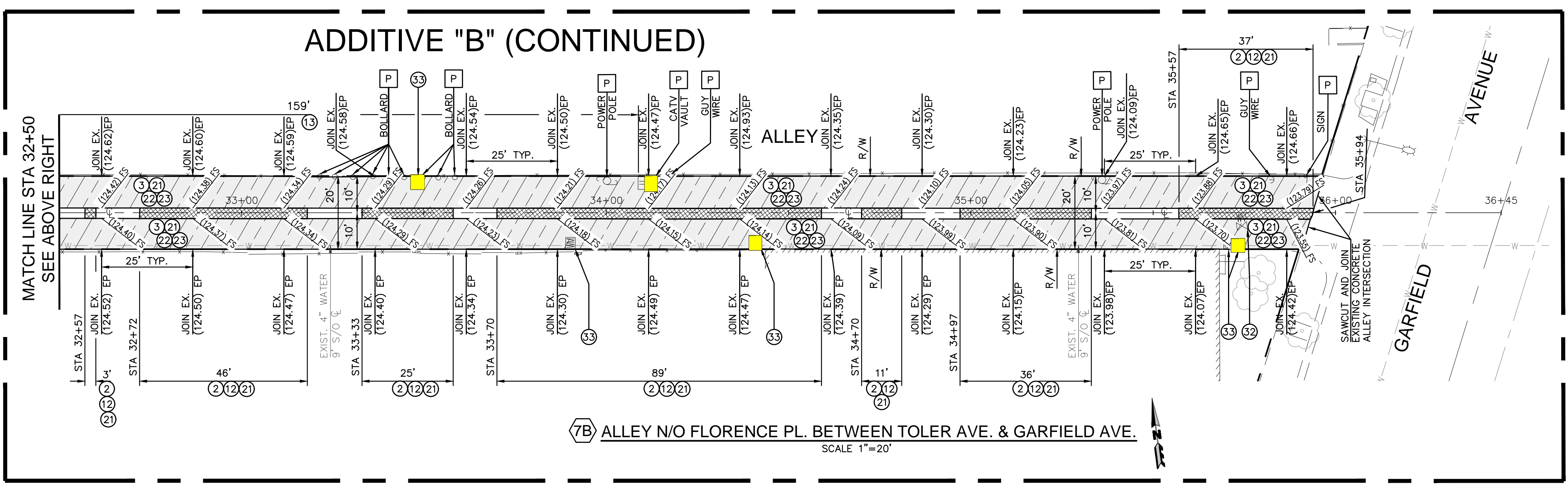
**NOTE:**  
EXISTING ELEVATIONS ARE THE PROPOSED ELEVATIONS, UNLESS OTHERWISE INDICATED.



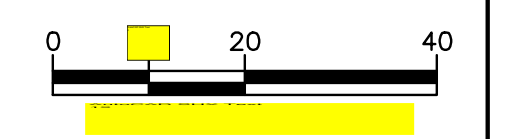
6A ALLEY N/O FLORENCE PL. BETWEEN GRANGER AVE. & ALLEY  
SCALE 1"=20'



7B ALLEY N/O FLORENCE PL. BETWEEN TOLER AVE. & GARFIELD AVE.  
SCALE 1"=20'



7B ALLEY N/O FLORENCE PL. BETWEEN TOLER AVE. & GARFIELD AVE.  
SCALE 1"=20'



CONTRACT BY BEFORE YOU DIG 811 SAFE DIGGING PARTNER  
 INFRASTRUCTURE ENGINEERS  
 3860 Slaus Street, Suite 250  
 Brea, CA 92821  
 Tel: (714) 940-0100  
 Fax: (714) 940-0700  
 www.infrastructure-engineers.com  
 DESIGNED BY: J. SANTILLAN  
 DRAWN BY: J. SANTILLAN  
 CHECKED BY: M. FARAHANI DATE: 8/14/23

**UNDERGROUND SERVICE ALERT OF SOUTHERN CALIFORNIA**

811

DATE	DESCRIPTION	APPROV.

**INFRASTRUCTURE ENGINEERS**

3860 Slaus Street, Suite 250  
Brea, CA 92821  
Tel: (714) 940-0100  
Fax: (714) 940-0700  
www.infrastructure-engineers.com

DESIGNED BY: J. SANTILLAN  
DRAWN BY: J. SANTILLAN  
CHECKED BY: M. FARAHANI DATE: 8/14/23

**CITY OF BELL GARDENS**

**VARIOUS ALLEYS IMPROVEMENTS  
ALLEY IMPROVEMENT PLAN**

5 ALLEY E/O EASTERN AVE. BETWEEN JABONERIA RD. & QUINN ST.  
 6A (ADDITIVE BID ITEM): ALLEY N/O FLORENCE PL. BETWEEN GRANGER AVE. & ALLEY  
 7B (ADDITIVE BID ITEM): ALLEY N/O FLORENCE PL. BETWEEN TOLER AVE. & GARFIELD AVE.

Drawing Number:  
**C-5**  
5